

In This Issue

- President's Message
- Director's Message
- Convention Info
- Member Spotlight
- Local Unit News
- ARTA Scholarship
- ARTA Travel
- In Memoriam
- Memorials/Donations
- New Life Members

REMINDER

Annual Unit Reports
Nomination Forms
Scholarship Applications

DUE June 15, 2016

Coming in August

If you are eligible for the annual 3% cost-of-living adjustment (COLA) from ATRS, it will be applied to your July benefit payment. You should notice it on the payment you receive at the beginning of **August** (not July).



Find us on
Facebook

Annual ARTA State Convention

The 2016 Annual State Convention will be held on September 27, 2016 at the Benton Event Center in Benton, Arkansas. The ARTA Board of Directors invites every association member to attend.

The check-in desk and exhibits will open at 8:30 a.m. in the lobby of the Event Center. The General Business session will convene at 9:30 a.m.. Business items include the presentation of the 2016-2017 officers for approval by ARTA members and reports on topics of interest to the general membership. Local units and individuals will also be recognized for their accomplishments.

Following the general business session, attendees will "break out" to the educational sessions of their choice. Attendees will reconvene for the convention luncheon following the breakout sessions.

The convention luncheon will include the presentation of the Parsons-Burnett Scholarship Grants by Meghan Ables, Arkansas Teacher of the Year. It will conclude with a report from the Arkansas Teacher Retirement System.

Participants must have a ticket for the luncheon, which costs \$25. Tickets can be obtained by calling the ARTA office or by returning the registration form found on

ARTA:
*The Voice of Retired
School Employees*



September 27, 2016

page 3.

Be sure to bring some spending money for the Silent Auction which will run concurrently with the convention. Read more about the auction on page 7.

The ARTA convention staff can be reached at:

Tammy Gray
501-375-2958 or 888-929-0955
tammy_arta@att.net

EBD to Send Letter to Those Becoming Medicare Eligible

After meeting with ARTA representatives, the Employee Benefits Division has agreed to begin sending a letter to retirees who are becoming Medicare eligible, or when their covered spouse is becoming Medicare eligible. The letters will be sent 120 days before the affected member's Medicare eligibility date.

The letter will detail how the member and their covered spouse and dependents will be affected by the move to the Medicare Primary plan, options the member may have, and how to send in copies of their Medicare cards to EBD.

Per the ARBenefits Summary Plan Document, if the spouse of a non-Medicare retiree is becoming

Medicare eligible, the non-Medicare Retiree can elect to drop their spouse's coverage if they (the retiree) wish to remain on their current plan and not be moved to the Medicare Primary Plan.

If the non-Medicare retiree chooses to drop their spouse's coverage, they must notify EBD of their decision 60 days prior to their spouse's Medicare eligibility date. The letter will include a new form that retirees can use to drop their spouse who is becoming Medicare eligible if they wish to discontinue their spouse's coverage.

Should retirees have any questions, they can contact EBD Member Services at 1-877-815-1017 ext. 1 or by email at AskEBD@dfa.arkansas.gov.

Message from the President

Farewell from the President

Can you believe another ARTA year has come, and on June 30, it will be gone?

Bidding farewell and leaving the ARTA presidency is more difficult than accepting the office and saying, “Hello, I am ready to work.” Reflecting on the state convention’s theme: “There is no business, like ARTA’s business”, I have found that this has been a good year to work on ARTA’s business. I chose membership as my passion and platform. I am happy to report that we have had successful membership campaigns throughout the state. We now have 12,282 ARTA members and 11,390 local unit members.



We have gained many new members this year. Thanks to Donna Morey for recruiting at every local unit meeting she attended. Thanks to Mary Alice Hughes, Lisa Bamburg, and Matt Hughes for holding pre-retirement sessions and including an ARTA membership application in every packet given to attendees. Thanks to the AARP communication’s staff for announcing ARTA’s Area Spring Conferences in the last newsletter. However, special thanks go out to all local unit officers, committee membership chairs, ARTA members and local unit members who joined me in recruiting new members. ARTA is stronger, bigger and better because of you. You made ARTA’s membership business your business; now “go on with the show”. Thanks to all for remembering that membership matters, knowing that there is strength in numbers; and active members are the heartbeat of ARTA, yet realizing that recruiting members is a never ending task which requires every member to get a member.

Thank you for inviting me to visit with your local units throughout the state. I enjoyed every trip-the programs, the food and the fellowship. Thank you for carrying on and keeping your local units active and trying to get all members to hold dual memberships in our professional organizations. Traveling Arkansas was a bonus and I really got a chance to see all six areas working and carrying out *ARTA’s business*. I applaud your diligent service, your hard and tireless work, your leadership and your desire to promote *ARTA’s vision*. I attended five of the six area meetings before the newsletter’s publishing deadline. I observed many outstanding features and creative dimensions in the area programs. Each area’s meeting/program was different, but each provided a universal feature that can be used by all other areas:

- * the US Marshalls Museum’s history, development and site were introduced as a program resource;
- * the use of ARTA’s state committee chairs as program presenters and/or participants;
- * presentations of area programs in an effective, efficient and timely manner;
- * used local community (school, civic, business) and state resources collaboratively in program planning/execution;
- * an outstanding leadership model was shared for training local unit officers;
- * a fundraising strategy was demonstrated to show how local units can donate to the Parsons-Burnett Scholarship Fund;
- * a membership recruiting strategy was created and presented using a relevant theme: “Vote in 2016 for the ARTA Membership Party”.

Continued on Page 11

Important Contact Information

Arkansas Retired Teachers Association
Inside Pulaski County: 501-375-2958
Toll Free (Nationwide): 1-888-929-0955
Fax: 501-376-0955
E-mail: office_arta@att.net
www.artanow.com

**Arkansas Teacher Retirement System
Retirement Benefits and Checks**
Inside Pulaski County: 501-682-1517
Toll Free (Nationwide): 1-800-666-2877
E-mail: info@artsr.gov
www.artsr.gov

**Employee Benefits Division
(Health and Life Insurance)**
Inside Pulaski County: 501-682-9656
Toll Free (Nationwide): 1-877-815-1017
E-mail: AskEBD@dfa.state.ar.us
www.arbenefits.org

Long Term Care Insurance Annuities · Dental Insurance Medicare Products

Mary Alice Hughes
AR Insurance License # 29888
1-501-988-2726
Email: info@ia-office.com
www.ia-office.com
PO Box 646
Jacksonville, AR 72078

Matt Hughes
AR Insurance License # 29891
479-967-1339
matt@matthughesinsurance.com
2000 West Main Street
Russellville, AR 72801

Delta Dental Insurance
501-988-2726
www.deltadentalar.com



The Interlink is published by
Arkansas Retired Teachers Association
Parkview Towers, 1200 Commerce, Ste. 103
Little Rock, AR 72202

Dr. Ella Walker-Rolfe President
James Morris President-Elect
Paulette Parker Vice President
Sharon Rapp Secretary
Donna Morey Executive Director
Mary Huie Office/Travel Manager
Tammy Gray Communications

Message from the Executive Director

Greetings Retired Arkansas Public School Employees,

The 2016 Fiscal Legislative Session adjourned with few changes to the State budget. The public school funding was cut to an increase half of what has been budgeted in the past several years. ARTA will be gearing up our efforts to maintain pension and insurance benefits for all public school retirees in the 2017 General Assembly. Each of you is encouraged to join our legislative conference calls and updates. The reason is to inform retirees in your local communities of the issues affecting your lives. Please email me or call the ARTA office to be added to the group.

Each May the six ARTA membership areas hold their Spring Conferences. It is a joy to travel with the ARTA staff and officers to these meetings, where we visit with our fellow school retirees. Each Area has a unique program for its members to enjoy. Area IV met in Ashdown with a focus on giving donations from the local units to help fund the Parsons - Burnett Scholarship Fund. The monies that are sent to ARTA as memorials, in honor of individuals and as gifts are used to provide scholarships to active public school educators who are continuing their studies in educational fields. We know giving help to practicing educators supports the children of Arkansas' public schools. Please consider making a contribution in honor of your favorite school employee.

This issue of the INTERLINK has been mailed to as many retired public school employees as we are aware. Our goal is for all to join ARTA. The easiest way to know if you are a member is if you receive the INTERLINK quarterly - not just in June. If you are still unsure whether you are a member, contact the ARTA office. Your membership is vital to ensuring that all public school retirees maintain great pension, health insurance and many other benefits to enjoy. ARTA is the only membership organization whose sole purpose is to ensure the best pension and benefits for retired public school employees. Please join us and for those 12,300 members, thank you for supporting your retirement association.

Mary Huie and I were honored to visit Switzerland in April with the Collette Company. It was an amazing week with great experiences. In Bern, we visited the Albert Einstein Museum. I leave you with one of Albert's quotes - "Anyone who has never made a mistake has never tried anything new".

Enjoy your retirement and go make some mistakes!

*Grace and Peace to All,
Donna*



Annual ARTA State Convention

Tuesday, September 27, 2016
Benton Event Center
9:30—2:30

**Please make your reservation
by September 16, 2016**

**NO RESERVATIONS ACCEPTED
AFTER SEPTEMBER 20, 2016**

Mail to: ARTA Convention
1200 Commerce Street Suite 103
Little Rock, AR 72202

Reserve by phone:
501-375-2958 or 888-929-0955

If you are registering multiple members, please include a list with the following information for each attendee:

Name _____

Address _____

City/County _____

Phone _____ Email _____

Breakout Sessions

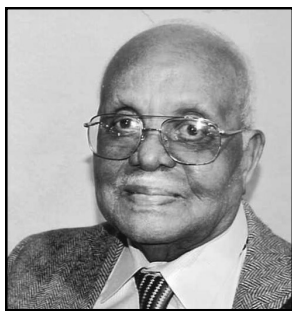
- ☐ Avoiding Mistakes in Retirement, Insurance Advantage, LLC
- ☐ Traveling with ARTA, Collette Travel
- ☐ Health Literacy, Arkansas Cooperative Extension
- ☐ Prepare to Care: A Planning Guide for Families, AARP
- ☐ Fraud Protection

Tickets can be picked up on the day of the convention. **To have tickets sent to you in advance, please include a stamped, self-addressed envelope.**

_____ ticket(s) @ \$25 each (refreshments & luncheon) = _____

Check Name _____ Check # _____ Received _____

Member Spotlight



Thomas Baskins CM
Little Rock Retired Educators,
Little Rock Retired Teachers
Retired—Brinkley Schools



Bunia Baxter CM
Jefferson County RTA
Retired—Dollarway Schools

The individuals honored here have reached the age of 90 or greater. They are recognized not only for their longevity, but for their lifelong contributions to their communities. Through their years of service in Arkansas schools and membership in ARTA as well as one or more local RTA units, they have served and continue to serve as wonderful examples for both students and colleagues.



Norma Calhoun CM
Conway County RTA
Retired—South Conway
County Schools



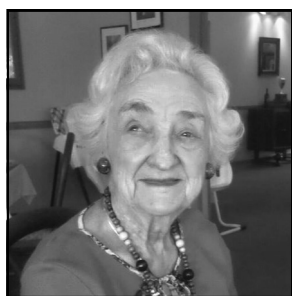
Glenda Clay CM
Little Rock Retired Teachers
Retired—Little Rock Schools



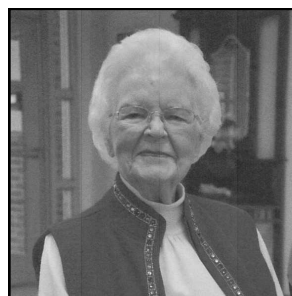
Para Conner LM
Phillips County RTA
Retired—Helena Schools



Esther Hill Cook LC
Boone County Retired
Teachers and Support Staff
Retired—Harrison Schools



Mildred Crawford CM
Boone County Retired
Teachers and Support Staff
Retired—Harrison Schools



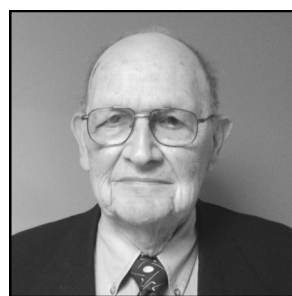
Margaret Daniel CM
Arkansas County RTA
Retired—Ashdown Schools



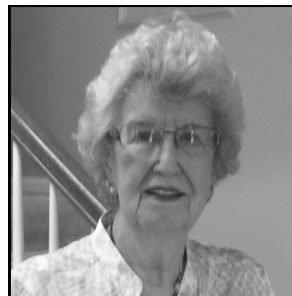
Geneva Edwards CM
Greene County RTA
Retired—Paragould Schools



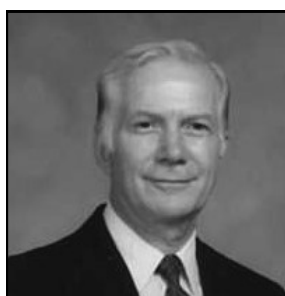
Marie Fair LC
Little Rock Retired Teachers
Retired—Little Rock Schools



Paul Fair LC
Little Rock Retired Teachers
Retired—Little Rock Schools



Mary Fine CM
Little Rock Retired Teachers
Retired—Little Rock Schools



Charles Grisham LM
Retired—Little Rock Schools

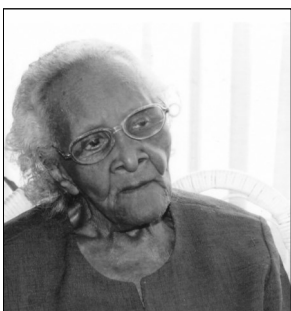


Iva Ada Hicks LC
Greene County RTA
Retired—Greene Co Schools

Member Spotlight



Ouita Jeffers LM
Franklin County RTA



Mildred McKinney LM
Ouachita County RTA



Etoyle Mouser LC
Jefferson County RTA
Retired—Pine Bluff Schools



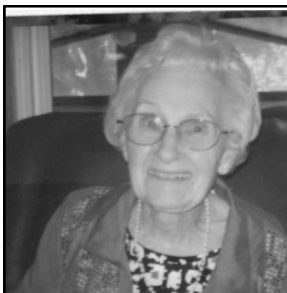
Donald Patterson CM
Jackson County RTA
Retired—Jackson Co Schools



Arkie Neil Remley LM
Hot Spring County RTA
Retired—Malvern Schools



Betty Rice CM
Scott County RTA
Retired—Waldron Schools



Johnnie Siitonen LM
Prairie County RTA
Retired—Des Arc Schools



Captoria Taylor LM
Lee County RTA



Helen Wells CM
Franklin County RTA



Ollie Barron CM
Jefferson County RTA
Retired—Pine Bluff Schools



Jennie McDuffie LM
Jefferson County RTA
Retired—Fordyce Schools

Not Pictured

Boatright, Augusta LC
Crawford County RTA

Dowell, Nell LC
Searcy County RTA, Retired—Marshall Schools

Hayes, Martha CM
Johnson County RTA

Kanakis, Mildred CM
Retired—Pulaski County Schools

Rainwater, Elmer CM
Polk County RTA, Retired—Acorn Schools

Reed, Virginia CM
North Pulaski RTA, Retired—Pulaski County Schools

Rich, Juanita CM
North Pulaski RTA, Retired—North Little Rock Schools

Ward-Maddox, Willene LM
Polk County RTA, Retired—Mena Schools

York, Faye Marie CM
West Central Counties RTA, Retired—Kirby Schools

ARTA Members Serve Local Communities

Baxter County RTA Supports Local Students

The 410 Thrift Store at Mountain Home High School was opened in 2013 to meet the needs of its students. It provides clothing, school supplies, toiletries, graduation attire, prom attire, and much more. It depends primarily on donations of money and items from businesses, organizations and individuals to operate the program.

In 2014, the Baxter County Retired Teachers Association created the 410 Project as its Youth and Community Service Project. During 2014-15, the 16 members of BCRTA donated \$1100 plus personal care items and clothing to the store.



410 Thrift Store display.

Donated items are distributed to students who have received vouchers based on need or as rewards for good citizenship, behavior, grades, etc. This ensures that students are not singled out for what they do or do not have, but that all students have the opportunity to receive items.

Donations are handled by members of Students4Students, who also maintain the store and manage other community involvement. This includes tours of the store and presentations to organizations such as the BCRTA.

Students4Students members are learning about merchandising, communication, PR, management and organizational skills, carpentry and volunteerism. They also coordinate special programs for Christmas, prom, graduation, Senior pictures and more.

Through their support of the 410 Thrift Store, the BCRTA has found a way to not only help students *do* good, but also to *look* good. Most recently, they provided donations to help with prom needs, such as dress and tuxedo rentals and alterations, hair and makeup appointments, dinner donations and more.



Pictured L to R:
Patty Marion,
Students4Students
members Taylor
and Kaci, Glenda
Bodenhammer.

Craighead County RTA a Blessing to Neighbors

Helping Neighbors Interfaith Food Pantry began operations in 1995 to provide food to Craighead County residents in need. In its first year the pantry served 9,000 clients and distributed over 93,000 pounds of food. In recent years, food distribution has nearly tripled.

To address the growing need for both food and volunteers, a representative from the Helping Neighbors presented a program at a monthly meeting of the Craighead County Retired Teachers Association. The CCRTA members voted to participate in the “Feed the Need” program for their Community Service Project.

Since that time CCRTA members have regularly brought canned and boxed items or monetary donations to each monthly meeting. Several members also volunteer at the pantry each week, some daily. This assistance has helped the pantry to gather, sort, store and distribute food into the hands of those in need.

As do most food pantries, Helping Neighbors relies solely on donations of time, food, supplies, equipment and money to continue their mission. They are most appreciative of the members of CCRTA who “Feed the Need”.



Neatly stocked shelves at the Helping Neighbors Food Pantry.

If you live in one of these areas and would like to learn more, please contact the local RTA unit or the organization. Both 410 Thrift Store and the Helping Neighbors Food Pantry also have Facebook pages.

ARTA Parsons-Burnett Scholarship Program Supports Educators



In 1996, ARTA awarded Parsons-Burnett Scholarships to four Arkansas educators. One of those recipients was ARTA Life Member Anita Stafford of Paragould.

Ms. Stafford recently recounted how she was invited to travel to the ARTA convention in North Little Rock that year with mem-

bers from the local retired teachers association. She recalled how much fun the trip was, and how much she enjoyed the convention. "I sat at the head table, next to (former State Auditor) Gus Wingfield. It felt like such an honor, to receive the scholarship and to be invited to attend this wonderful luncheon. I was very flattered."

She also remembered how much she appreciated the scholarship. It enabled her to obtain her secondary school counseling certification at Arkansas State University. She completed her schooling course by course, while working and maintaining her family. She agreed that she would have loved to have been able to take some of her courses online, the way students do now. That wasn't an option, but she was able to complete her education and work as a counselor until she retired in 2008.

Upon retiring, Ms. Stafford promptly joined ARTA as a Life Member, in part because she remembered how much fun the ARTA members seemed to have. She was also pleased that the scholarship program continues to assist educators with graduate study, as education costs are so great and this type of assistance (for graduate study) is less available.

These days Ms. Stafford stays busy reading, writing, and maintaining a blog about recipes, cooking and home organization. She also enjoys meeting with other active and retired educators from the Greene County Tech School District.

STAY CONNECTED

Please let us know if you or an ARTA member you know has moved. Call us toll free at 1-888-929-0955 or locally at 375-2958.

You can also help us stay in touch between newsletters by sharing your email address with us at office_arta@att.net.

Thanks for helping us all stay connected.

About the Parsons-Burnett Scholarship Fund

The Parsons-Burnett Scholarship Program was established to provide financial assistance for practicing educators to further their education.

The scholarships are awarded each year to practicing educators based on successful teaching performance, proven academic record, compelling application statement, and financial need.

Application forms are available on the ARTA web site, www.artaNOW.com or by request from the ARTA office. Applications and all supporting documentation must be received by June 15, 2016.

By the Numbers

The ARTA scholarship program was established in 1995 and named for Floyd Parsons and Johnnie Burnett in 1996. Since its inception, more than \$110,000 in scholarship funds have been awarded.

The program is funded by contributions and memorials from ARTA members and supporters. Contributions may be sent to the ARTA office at any time, in any amount.

Contact Us

ARTA
1200 Commerce Suite 103
Little Rock, AR 72202
501-375-2958
888-929-0955
office_arta@att.net

By the Numbers, Part Two

In 2015, the Annual State Convention included a silent auction of items donated by ARTA members. The proceeds of the auction totaled \$790, which were designated for the Parsons-Burnett Scholarship Fund.

The 2016 convention will again include a silent auction. If you, your local unit or your area council are interested in donating an item for the auction, please contact Tammy Gray at 1-888-929-0955 or tammy_arta@att.net.

We hope to include a preliminary list of auction items for preview in the next edition of the INTERLINK. Items can be brought with you to the convention.

Travel Opportunities

ARTA members and their families are invited to join us for fun and exciting trips of a lifetime! Guests are welcome but must travel with an ARTA member. Whenever possible, ARTA trips are escorted by the ARTA Travel Manager or the ARTA Executive Director. A detailed itinerary and the cost for each trip are available by calling the ARTA office at 501-375-2958 or by visiting our website artanow.com. **ARTA reserves 25 airline seats with Collette for each trip. Therefore, an early booking with deposit will help ensure your airline seat and a price reduction. Reservations made after ARTA's airline reserve of seats are booked or the seat reduction date has passed, are based upon availability and the price reduction no longer applies. Alternate airline gateways, other than Little Rock, such as Northwest AR, Fort Smith and Memphis, TN are available if you prefer to depart from there (usually at no additional cost). You would join the group at the trip destination.**

For the last three years ARTA has partnered with Collette – Guided by Travel and one of the benefits Collette provides is: travel loyalty, through a simple online process, after booking a trip. Once you depart you will receive, from Collette, a \$150 credit per person towards your next trip if you travel within the next 12 months or \$100 credit per person if you travel before the end of 24 months. Another benefit is a worry-free travel protection plan. If you need to cancel for any reason, right up until the day prior to departure, you will get a full refund (less the cost of the insurance plan). Additionally, you are covered on tour. If you have to stop your trip or return home early, need medical assistance or evacuation, suffer a baggage loss or delay, or are delayed on tour for 12 hours or more you are covered.

ARTA contracts with Cline Tours for motor coach trips taken twice a year. A minimum of 40 passengers booked with a deposit is required for these trips. Again, book early! Your deposit is refundable until 30 days before final payment is required. Suggestions for future ARTA trips are always welcome so let us hear from you regarding your dream destination.

Happy Travels,

Mary Huie, ARTA Travel Manager

2016 Remaining Travel Opportunities

June 6-14, 2016

Bus Trip to Niagara Falls—**CANCELLED**

September 13-25, 2016

Alaska Discovery Land & Cruise—**SOLD OUT**

October 8-16, 2016

Magical Rhine and Moselle—**SOLD OUT**

November 28-December 2, 2016

Spotlight on New York Holiday—**SOLD OUT**

2016 Remaining Travel Opportunities

October 29-November 4, 2016—Bus Trip to Smoky Mountains for Fall Foliage. Book before July 15, 2016 with deposit and save \$75.00 per person. Make plans now to sit back and enjoy the fall foliage as we travel to the Smoky Mountains. Great Smoky Mountain National Park covers over one-half million acres, making it the largest national park in the east. The Greystone Lodge on the River located in Gatlinburg, Tennessee will be your home for four nights. Excursions from Gatlinburg will include: Dollywood Theme Park; a tour of the Biltmore Mansion in Ashville, North Carolina with lunch at the Deerpark Restaurant; a guided trolley tour of Ashville; a ride on the Ober Gatlinburg aerial tram; and the Country Tonight Show. The trip will also include a stop at Discovery Park of America in Union City, Tennessee. The park offers visitors world-class entertainment and educational experiences with more than 70,000 square feet of exhibits focused on nature, science, technology, history and art, and 50 acres of gardens, grounds and exhibits focused on history. The return trip will include a visit to quaint Franklin, Tennessee. **Deposit: \$200.00.**

2017 New Travel Opportunities

February 10-16, 2017—Iceland's Magical Northern Lights. Discover Iceland, a land and culture forged by fire and ice. Steaming lava fields and massive glaciers sculpt mountains and valleys, leaving thundering waterfalls and plunging fjords. In this land of many natural wonders, enjoy the rare opportunity to see the aurora borealis – one of nature's most dazzling light displays, also known as the northern lights. **A deposit of \$250 per person due upon reservation. Reservations are made on a first come, first served basis. Reservations made after August 4, 2016 are based upon availability. Book now and save \$200 per person.**

March 10-19, 2017—Sunny Portugal—Estoril Coast, Alentejo & Algarve (with optional Madeira Island post-tour extension). Portugal – a historic land of great explorers - is waiting for your own exploration. Discover ancient castles, Roman ruins, groves of lemon and almond trees, quiet whitewashed villages and kind, gentle people. Experience local cuisine and wine while immersed in the moving sounds of Fado. Other highlights include: a stop in historic Evora, known as the "Museum City of Portugal; 3-night stay on the Portuguese Riviera; tour of Lisbon; overnight among vineyards and farmland in the heart of the Alentejo region and 5 UNESCO World Heritage sites. For more information on the optional Madeira Island post tour, call the ARTA office. **A deposit of \$250 per person due upon reservation. Reservations are made on a first come, first served basis. Reservations made after the deposit due date of September 5, 2016 are based upon availability. Book now and save \$200 per person.**

**May 2017—Alaska Discovery Land & Cruise
DATE TO BE ANNOUNCED**

**June 2017—Bus Trip to Charleston & Savannah
DATE TO BE ANNOUNCED**

Travel Opportunities

July 18-25, 2017—America's Cowboy Country. Welcome to Jackson Hole, America's most famous cowboy town. Find yourself amid its rare blend of elegance and western charm. Your first taste will be a covered wagon ride to enjoy a chuck wagon dinner with entertainment. The National Park Service is celebrating 100 years of service in August, 2016, so you must explore Yellowstone National Park, the first national park in the world watching Old Faithful geyser erupt, sending steam high in the air. Other highlights include: a visit to rambling Deadwood, a National Historic Landmark; embarking on either a relaxing wildlife float trip or an exciting whitewater rafting adventure and a Black Hills gold tour. **A deposit of \$250 per person due upon reservation. Reservations are made on a first come, first served basis. Reservations made after January 11, 2017 are based upon availability. Book now and save \$100 per person.**

August 10-19, 2017—Discover Switzerland, Austria & Bavaria. Begin your tour in Bern, the capital of Switzerland and a UNESCO World Heritage site nestled in the Swiss countryside. A panoramic sightseeing tour of Bern features the Bundeshaus (the Swiss Parliament), the famous Bear Pit, the Rose Gardens and the gothic cathedral which dominates Old Town's skyline. Experience a ride on the Golden Pass Panoramic train from Montreux to Gstaad; walk the halls of the legendary, medieval Chateau de Chillon, located on the shores of Lake Geneva and witness the musical tradition of Austria during a Tyrolean folklore show. Other highlights are: a day exploring Salzburg's historic past; a walking tour of Lucerne's Altstadt (old town); traveling to Bavaria and seeing the famous Nuschwanstein Castle. Delight your taste buds experiencing local cuisine such as cheese fondue and a wonderful dinner at the 1,200-year-old St. Peter's Restaurant, Austria's oldest. **A deposit of \$250 per person due upon reservation. Reservations are made on a first come, first served basis. Reservations made after February 4, 2017 are based upon availability. Book now and save \$250 per person.**

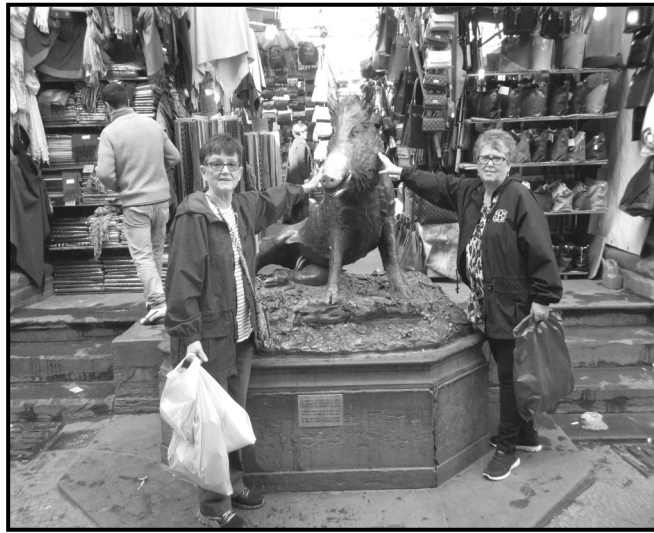
September 13-20, 2017—Pacific Northwest & California. Your scenic tour through the Pacific Northwest and California opens in one of America's most picturesque cities, Seattle. Embark on a sightseeing tour of the "Emerald City," including the colorful restored waterfront area, historic Pioneer Square and lively Pike Place Market, a famous fish and vegetable market dotted with restaurants and shops. Traveling south through Oregon, discover the awe-inspiring landscapes on a tour of the magnificent Columbia River Gorge and the Bonneville Dam, where you will learn about its fascinating hydropower and history. On the way to the coastal town of Newport you will see the Willamette Valley. It contains some of the

most fertile agricultural soils of Oregon and nurtures vegetables, flowers, herbs and vineyards. Next stop – Gold Beach, known for amazing wildlife including bald eagles, cormorants, seals and blue heron. Further south, you will enter the Redwood Country of California. In Redwood National Park see trees that rise to nearly 300 feet tall and later enjoy Eureka, CA, a historic timber and fishing village featuring Victorian architecture of Old Town. Last but not least, San Francisco with several different choices for you to enjoy your time there.

October 2017—Bus Trip to Amish Country
DATE TO BE ANNOUNCED

Late October – Early November, 2017—Spotlight on Washington, D.C. (Date to be Announced).

Explore America's heritage and history on this in-depth tour of the capital city of the United States. Spend five memorable nights in the heart of Washington, D.C. Highlights include: a visit to Mount Vernon, the beloved home of the first U.S. president, George Washington; Smithsonian Institution; choice of famed Air and Space Museum or the National Museum of American History; Washington National Cathedral; Ford's Theatre; Arlington National Cemetery with a narrated tour including the Tomb of the Unknowns and the Kennedy gravesites; World War II Memorial, the Vietnam Veterans Memorial and the Korean War Memorial.



Hilda Burton (left) and Carolyn Burton (right) discover a "razorback" at the Straw Market in Florence, Italy.

December 29, 2017-January 2, 2018—California New Year's Getaway (with optional Las Vegas post-tour extension). Ring in the New Year in style with the ever-popular tour featuring the Tournament of Roses Parade. Arrive in Pasadena with a once-in-a-lifetime opportunity to view the floats in their final stages of decoration. Next attend Bandfest which features selected bands from all over the country that will perform in the parade. Return to Los Angeles for free time to explore on your own. Perhaps you will visit The Grove, a large shopping complex with several shops and 10 restaurants, or hop aboard the trolley to see the historic Farmers Market. Sunday get ready for a New Year's Eve Gala Dinner Dance with live entertainment and a champagne toast to help ring in the New Year. Monday – Welcome to the Tournament of Roses Parade, a grand tradition since 1890. You will have reserved seating for prime viewing. The parade consists of 43 floats and 21 marching bands. For more information on an optional 3-night Las Vegas post tour call the ARTA office. **A deposit of \$250 per person due upon reservation. Reservations are made on a first come, first served basis. Reservations made after July 22, 2017 are based upon availability. Book now and save \$100 per person.**

In Memoriam

"These immortal dead who live again in minds made better by their presence"

Ashley County

Bertha Bolin
Mary E. Brooks
Jim B. Rogers

Baxter County

Charles R. Coates Jr.
Anita Davis
Arrie M. Goforth
William E. Scott

Benton County

Marquette J. Arnold
Helen C. Cloyd
Mary M. Hixson
Steven K. Hundley
Anna N. Morinini
Roland M. Smith
Marjorie M. Stewart
Minnie R. Townsend
Lawrence A. Vela

Boone County

Carolyn J. Casey
Janice D. Rice
Sammie L. Shelton
Virgil R. Stonecipher
Joseph R. Watts

Bradley County

Charles H. Belin
Marjorie A. Bishop
Cherie E. Bradford
Darryl F. Green

Calhoun County

Arvy J. Easter

Carroll County

Barbara J. Owens

Chicot County

Jim Hankton
Bobbie A. Smith

Clark County

Mary L. Killian
Johnny Lyon

Clay County

Catherine J. Thompson

Cleburne County

Conrad L. Dawkins
Bill K. Knowles

Cleveland County

Emory L. Kemp

Columbia County

James R. Staggs

Conway County

Margaret L. Flory

Craighead County

James W. Bales

Crawford County

Tracey M. Fortenberry
Deborah L. Hight
Paul S. Richardson
Ann R. Ward

Crittenden County

Nadine A. Baker
James H. McCain

Cross County

Tommie L. Harris
Dennis D. Lambert
Pauline M. Moody

Desha County

Brenda A. Johnson
Johnnie F. Killion
Paula A. White

Drew County

Kathryn S. Brown

Faulkner County

Bernard J. Bakker
Betty J. Courtway
Janice L. DeJarnatt
Barbara A. Grissom
Carolyn M. Hall
Louis F. Haywood
Mary L. S. McNabb
Nancy B. Miller
Helen G. Mitchell
William E. Stephens
Pat H. Weeks

Franklin County

Laurabelle M. Brewer
Deanna L. Cunningham

Garland County

Stephen B. Baldwin
Sandra Cash
Margaret E. Garner
Patricia Hardister
Faye I. Horner
Gloria J. King
Dannie D. Loy
Billie J. Messer
Alfred W. Peterson
Beth A. Simpson
Thelma L. Smith
Virginia A. Webb
Thelma L. Whatley
Otis A. Wilson

Grant County

Glen R. Clay
Sunny J. Kelly

Hempstead County

Valerie Klipsch
Carolyn West

Hot Spring County

Mary A. Dixon
Lana D. Glenn

Independence County

Carnell W. McSpadden
Viola F. McSpadden
Robert R. Ralph
Van L. Reynolds
Joy L. Wilson

Jackson County

Maxine Johnson

Jefferson County

Georgia F. Creason
Lucy C. Lucas
Grady Mathews
Betty L. Watson
Barbara D. Willis

Lawrence County

Charlena E. Midkiff

Lee County

James L. Coleman

Logan County

Elizabeth A. Maxwell

Lonoke County

Muriel J. Dixon
Mary R. Miller

Marion County

Deborah E. Campbell

Miller County

Carrie E. Mackey
James M. Mitchell
Allen C. Monts
Marietha M. Neal

Mississippi County

Anita N. Mastowski
Martha W. Young

Monroe County

Donna R. Gunnell
Dolores A. Meacham
Sara J. Oltmann

Nevada County

Jimmie P. Hays

Ouachita County

Gloria D. Craig
Willie D. Harris
Richard D. Reed

Pike County

Frankye Driggers
L.Z. Watson

Poinsett County

Edith C. Leach

Polk County

Virginia J. Beam

Pope County

Iliff M. Dalby
Judith K. Gray
Willa M. Ingram
Pamela A. Mathis

Prairie County

John E. Weatherly

Pulaski County

Elizabeth Bilheimer
Santonia Charleston
Wilbur Coleman
Elizabeth A. Copley
Jennie S. Davis
Marjorie N. Faucette
Jesse E. Ford
Reba O. Gist
Robert H. Gladden
Earl B. Guenther
Margaret A. Hale
Hazel D. Hicks
Mildred J. Howard
Lorraine O. Johnson
Janet N. Lane
Artis T. Lofton
Lealer M. Mendenhall
David N. Polk
Annette S. Rodgers
Wesley D. Rooks
Ann B. Thompson
Willie Thompson
Billie J. Thorne
Doris A. Ward
Mary J. Westerman
Robert L. Wilson

Randolph County

Lonnie J. Gilbreth

Saline County

Sally L. Butler
Odessa L. Greer
Betty J. Hardin
Edward L. Love
Betty B. Scott
Mildred A. Westbrook

Searcy County

Cozette D. Campbell
Jasper W. Treece

Sebastian County

Clara L. Alverson
Sarah A. Birdwell
Jean Crowder
Helen M. Gray
Donna K. Perceful
Kathryn Gay Presley
Tommy N. Robinson
John A. Thellman

Sharp County

Robert L. Bettis Jr.

St. Francis County

Sherman W. Baker Sr.

Stone County

Jimie K. Johnson

Van Buren County

Sue Blakeney

Washington County

Rosalie H. Ashcraft
Joan A. Besonen
Mary V. Bishop
David J. Butt
Mary C. Caves
Alice T. Kennedy
Bonnie N. Monarrez
Mildred R. Montaque
Penny J. Morgan
Sharon K. Rexford

White County

Mildred L. Ray

Woodruff County

Mary E. Conner
Herman R. Holder

Out-of-State

June A. Astin
Berta P. Bills
Nona M. Bolar
Lucille W. Brown
Ray F. Curbow
Lynda M. Fausett
Lester Graham
Algee Jones
Thomas D. Marshall
Fern A. Norred
Milton H. Peebles Jr.
Sue F. Rogers
Daisy A. Spencer
Betty P. Wicks

Welcome New Life Members

Clay County
Janet L. Luter

Cleburne County
Betty R. McGruder
Nancy G. Rana
Patricia A. Thomas

Columbia County
Lenora Thomas

Craighead County
Jeanette Kay Williams

Cross County
Mary Joanna Haralson
Carolyn C. Veasley

Garland County
Patricia Alpe

Grant County
Sharla W. Dunigan
Marla W. Moore

Hot Spring County
Howard Coston

Jefferson County
Sandra L. Owen

Lincoln County
Elizabeth H. Thompson

Lonoke County
Judy Meier

Phillips County
Dorothy L. Billingsley

Pulaski County
Marcelline C. Carr

Alisa B. Dixon
Colleen O. Ferguson
Patricia N. Harris
Sherrie Mays
Lillian Louise Starling
Judith M. Trowell

Randolph County
John K. Chester

Saline County
Elizabeth (Libby) Austin
Rajeana R. Dukes

Sebastian County
Mary Patrice Floyd
Marie K. Hunt

Van Buren County
Sabra D. Murphree

White County
Christy Jane McBride

Out-of-State
Stephanie L. Angelette

Memorials and Donations

FEBRUARY, MARCH, APRIL

Thanks to the thoughtfulness and generosity of individuals and local units, \$1,622.00 in memorials, honorariums and scholarship donations were mailed to ARTA in the last three month period. An additional \$15, over and above the regular monthly dues contributed by Continuing Members, brings the total to \$1,637.00. Your gifts to ARTA, for whatever reason, are greatly appreciated and are a meaningful and substantive part of funding the Parsons-Burnett Scholarship Grants. These scholarships are awarded for educators currently practicing in Arkansas to further their graduate studies.

**Arkansas County RTA
Donation**
Parsons-Burnett Scholarship

**Boone County RTA
& Support Staff
In memory of:**
Mary Rose Hamm

**Clark County RTA
Donation**
Parsons-Burnett Scholarship

**Columbia/Lafayette RTA
In memory of:**
Dr. Kathryn Brown
Donation
Parsons-Burnett Scholarship

**Grant County RTA
In memory of:**
Sunny Kelly

**Hempstead County RTA
Donation**
Parsons-Burnett Scholarship

**Howard County RTA
Donation**
Parsons-Burnett Scholarship

**Independence County RTA
Donation**
Parsons-Burnett Scholarship

**Miller County RTA
In memory of:**
Allen Monts

**Nevada County RTA
In memory of:**
Allene Spencer

**Scott County RTA
In memory of:**
Samuel Gerald Oakes

**Searcy County RTA
In memory of:**
Cozette Campbell

**Sevier County RTA
Donation**
Parsons-Burnett Scholarship

**South Pulaski County RTA
In honor of:**
Donna Morey

**South Sebastian County RTA
In memory of:**
Clara Alverson
Charles Vincent

**Union County RTA
In memory of:**
Marcelle Vick

**West Central Counties RTA
In memory of:**
Frankye Driggers

**White County RTA
In memory of:**
Jack Harris
Brewer Lee Hefner

**Hyacinth Deon
Donation**
Parsons-Burnett Scholarship

**Bob Thompson
Donation**
Parsons-Burnett Scholarship

**Dr. Ella Walker-Rolfe
In honor of:**
Dr. Paul and Marie Fair

**Dr. Ella Walker-Rolfe
In memory of:**
Betty Mildred Pierce
Eliza Mae Williams

**Tom and Pauline Waller
In memory of:**
Sunny Kelly

**Leon and Ruby Wigginton
In memory of:**
William L. Digby
Carol Lou Eldridge
Brewer Lee Hefner
Sidney Kennedy
Bill Kessinger
Charles Knox
Barney L. Kyzar Sr.
Elsie W. Lawler
Burl W. Lieblong
Curtis H. Merrell
James R. Naylor
Laura B. Para
Jimmy W. Parrish
Bryan W. Speed
Beatrice Stafford
Wilma Jean Taegtmeier
Doris Terwilliger
Pat Weaver

Farewell, continued

All area meetings were informative, enjoyable, entertaining and educational. All afforded the fellowship needed to make ARTA diverse and strong. Thank you for allowing me to be your ARTA president and to observe as you showed that there is: "No business like ARTA's business". Best wishes as you continue to work and grow in ARTA.

My sincere congratulations to the new leadership team, James Morris and Paulette Parker, as you move us forward. ARTA is in good, safe hands. See you in September at the state convention. God bless you all.

*Ella Walker-Rolfe, Ph. D.
ARTA President*



PRSRT STD
U.S. POSTAGE
PAID
Permit No. 225
Little Rock, AR

Arkansas Retired Teachers Association
Parkview Towers • 1200 Commerce Street Ste. 103
Little Rock, AR 72202

The ARTA membership year is July 1—June 30. If you have received a complimentary copy or are an Annual Member, please complete and return the form below to join or renew your membership.



Find us on
Facebook

Arkansas Retired Teachers Association Membership Form

Act 105 of 1985 authorizes the Arkansas Teacher Retirement system to deduct your ARTA dues from your monthly benefit checks, if you desire. This authorization may be canceled only by a written notice from you to ARTA. You may also select one of the other membership options listed below.

ARTA CONTINUING MEMBERSHIP DUES
(1) ☐ I elect to have \$2 per month deducted from my benefit check for ARTA dues.

ARTA LIFE MEMBERSHIP DUES
(3) ☐ I elect to have \$20 deducted from my retirement checks each month for 12 months (Total \$240).

DIRECT PAYMENT
(2) ☐ Annual Membership (\$28 check enclosed).
(4) ☐ Life Membership (One-time \$240 check enclosed).

Name _____
Signature _____
Address _____
City/State/Zip _____
County _____
Social Security Number (last four digits) _____
Date _____
Email _____

Complete this form and return it to:
ARTA Membership, 1200 Commerce Street Ste. 103, Little Rock, AR 72202

(Return this form only if you are not currently an ARTA member or if you wish to make a change.)